



**PANTECH STEEL
INDUSTRIES SDN BHD**
(509731-A)



Product Catalogue

Manufacturer Of Wrought Steel Butt-Welded Fittings
& High Frequency Induction Long Bends

A Member of Pantech Group Holdings Berhad, listed on Main Market of Bursa Malaysia





Company Background

Pantech Steel Industries Sdn Bhd located in Klang, Selangor was established in year 2000 is a member of Pantech Group Holdings Berhad listed on main market of Bursa Malaysia.

Pantech Steel is certified by ISO 9001:2008, to ensure that we deliver the best quality, services and solutions to our customers at their utmost satisfaction.

The company is one of the leading manufacturers and deploys the latest technology to produce quality **butt-welded fittings from size ½” to 36”**. Our carbon steel butt welded fittings such as elbows, reducers, tees and end caps. All our fittings are conformed to ASTM A234 WPB and ASME B16.90. We also have capability to produce WPL6 and WPHY 52 fittings.

In view of the market demand, we have introduced **high frequency induction pipe bending services** to meet various oil and gas requirements of the industry. **Our production capability is from 2” to 40”, and the bending radius is from 3D to 7.5 metres and customized radius.**

To date, we have established strong recognition in both the domestic and international markets. Our export markets include North, Central and South America, Middle East, Africa, Asia and Australia.

Applicable Standards

Fittings	High Frequency Induction Long Bends
ASTM A234/A234M (WPB Fittings)	ASME B16.49
ASTM A420/A420M (WPL6 Fittings)	ASME B31.30
ASTM A860/A860M (WPHY 52 Fittings)	ASME B31.80
ASME B16.90	DNV OSF 101
CSA Z245.11-05 Cat I Gr.241	ISO 15590-1
MSS-SP-75	PFI-ES- 24
NACE MR0175/ISO 15156	TPA-IBS-98
TSE	Customer's Specification (Petronas, Shell, Exxon Mobil, Murphy, TOTAL, Chevron, Conoco Phillips, Technip, Pertamina, PTTEP and other customer's induction bend specifications.)





High Frequency Induction Long Bends

Bending Capabilities	
Size	2" to 40"
Wall Thickness	Any desired thickness
Bending Radius	Minimum 3D, Maximum 7.5metres and customized radius
Degree	Any desired degree
Pipe Material	Seamless or Welded pipes in carbon, stainless, duplex, superduplex, alloy steel and other special materials
Type of Bend	Single bends, J-tubes, Riser bends, Spool bends



Certificates

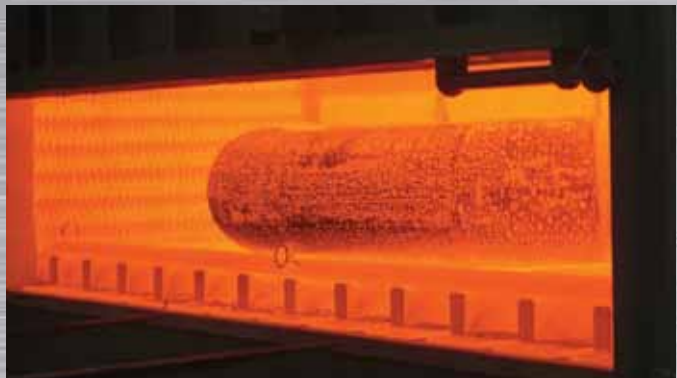
- 1) ISO 9001:2008
- 2) PED (Pressure Equipment Directive) 97/23/EC
- 3) CRN (Canadian Registration For Boiler And Pressure Vessel)

Type of Testings

a) Destructive Testing	b) Non-Destructive Testing
<ul style="list-style-type: none"> • Tensile Test at room temperature and also at elevated temperature • Charpy Impact Test (0°C to -60°C) • Macro Hardness Test • Metallographic Test • Guided or Weld Bend Test - For welded Materials • Hydrogen Induced Cracking Test (HIC) - Sour Service • Sulphite Stress Cracking Test (SSC) - Sour Service • Intergranular Corrosion Test • Pitting and Crevice Corrosion Resistance Test • Ferrite Count 	<ul style="list-style-type: none"> • Dimensional Inspection • Positive Material Identification (PMI) • Surface Hardness Test • Ultrasonic Thickness Check • Penetrant test - <i>Liquid</i> Penetrant Test (LPT) • Ultrasonic Flaw Detection (UTFD) • Radiography Inspection (RT) • Eddy Current Test (ET) • Drift Test / Pigging • Hydrostatic Test

Heat Treatment

Furnace Size
3m x 1.5m x 1.5m
6.5m x 2.5m x 1.5m
Temperature: Up to 1200 °C
Post Bend Heat Treatment
Stress Relieved
Tempering
Normalizing
Quenched & Tempered



**PANTECH STEEL
INDUSTRIES SDN BHD**
(509731-A)

Lot 13258 & 13259, Jalan Haji Abdul Manan, Off Jalan Meru, 42200 Kapar, Selangor, Malaysia.

Tel: +603 3393 1633 Fax: +603 3392 8966 Email: info@pantechsteel.com
Website: www.pantechsteel.com Group Website: www.pantech-group.com

A Member of Pantech Group Holdings Berhad, listed on Main Market of Bursa Malaysia